



TOTI



Saving energy **WATER TANK**

Another quiet, a different kind of perspective the United States,
to enjoy life a little delicate moment in each.

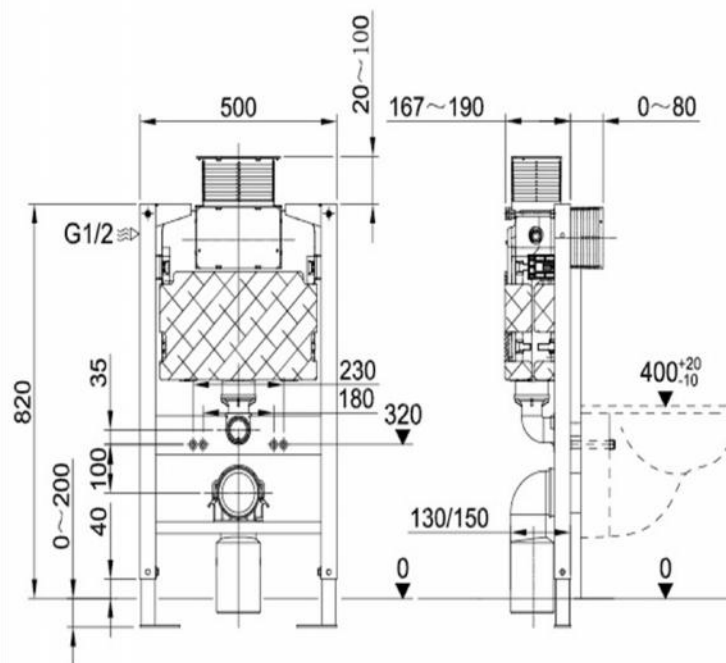


CONCEALED
INSTALLATION
SYSTEM

SYSTEM
INSTALLATION



K201-A(With K8044 Frame)
Dual Flush Concealed Cistern



Application:

For installation in front of a solid or drywall;

WC connection set, dia.90mm WC outlet bend, PVC or HDPE,
dia.90mm Adapter sleeve, dia.90/110mm;

For wall-hung WC with fastening distance 180mm-230mm.

Characteristics:

Frame height 820mm;

Flush adjustable for 6/3L or 4.5/3L;

Dacrometed leg supports,adjustable from 0-200mm;

Water supply connection left;

Top-operated/Front-operated alternative;

Easy installation with flexible steel wire for full flush;

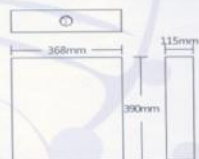
Powder-coated,colour WDI blue;

Heavy load for 400kg max.

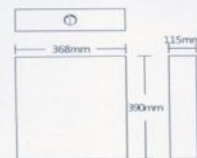




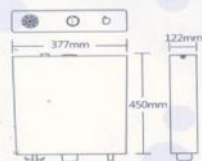
NIL1



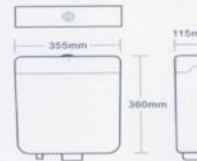
NIL2



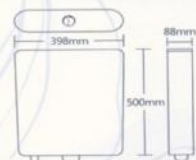
NIL4



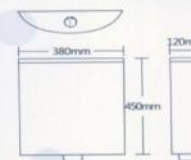
NIL5



NIL6



NIL7

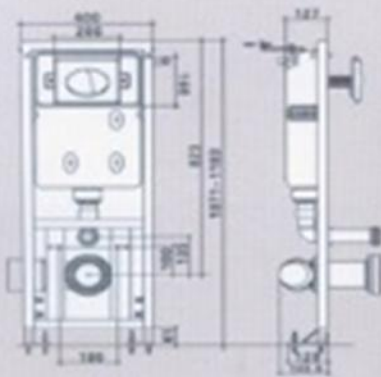


Four security

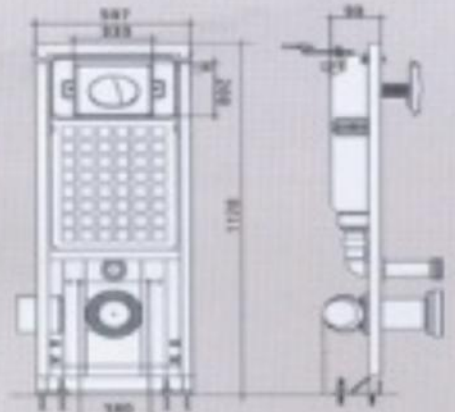


1. Super load 300KG
2. Effectively prevent children, the elderly foot leg slid into the toilet sewage outfall to prevent tripping falls due urinal stories;
3. Effectively prevent the phone, soap and other objects falling into the sewer;
4. Avoid drilling indoor rats and other pests from water pipes.

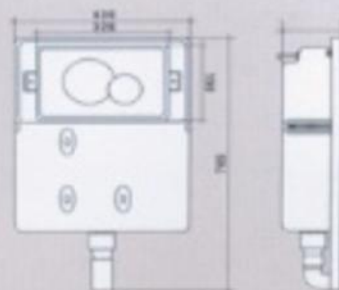
Wall-hung toilet-100DL



Wall-hung toilet-100K



Wall-hung toilet-100A



TOTI



CONCEALED INSTALLATION SYSTEM

CONCEALED INSTALLATION SYSTEM



فلاشتانک توکار ۸۲۰۲۶

۷۵۰۵۵



فلاشتانک توکار ۸۲۰۲۱

۸۲۰۲۱ توکار فلاشتانک

شعبه یک:

خیابان بنی هاشم بالاتر از پمپ گاز، مجتمع الماس بنی هاشم نمایشگاه توتی

تلفن ۰۲۱۲۲۵۰۸۰۶۲

۰۲۱۲۲۳۲۶۸۵۰

شعبه دو:

خیابان فردوسی جنوبی، روبروی سرهنگ سخایی، پلاک ۱۳۱، نمایشگاه توتی

تلفن ۰۲۱۳۳۹۴۳۴۶۱

۰۲۱۳۳۹۴۳۴۶۲

www.toti-co.com

www.toti-co.com